



Funded by the
Erasmus+ Programme
of the European Union



Local Development Strategy LEADER - Catalunya

**Maria Bernaus Viles
Arnau Casas López
Ares Delamoga Morancho
Maria Piñol Barceló
Arabela Vivar Morón
&
Eva Múrcia Soler (CAUC)
Teresa Castellà Gardenyes (CAUC)**

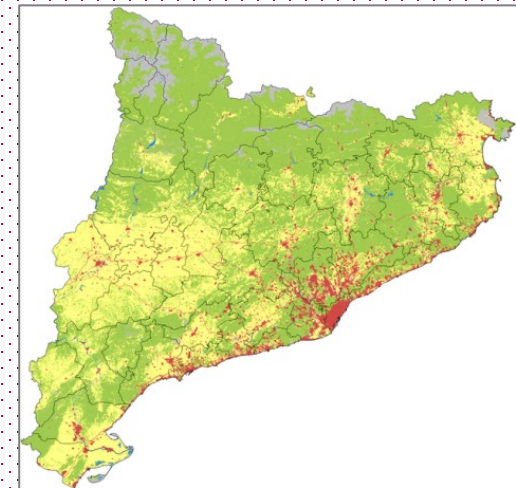
Territorial framework



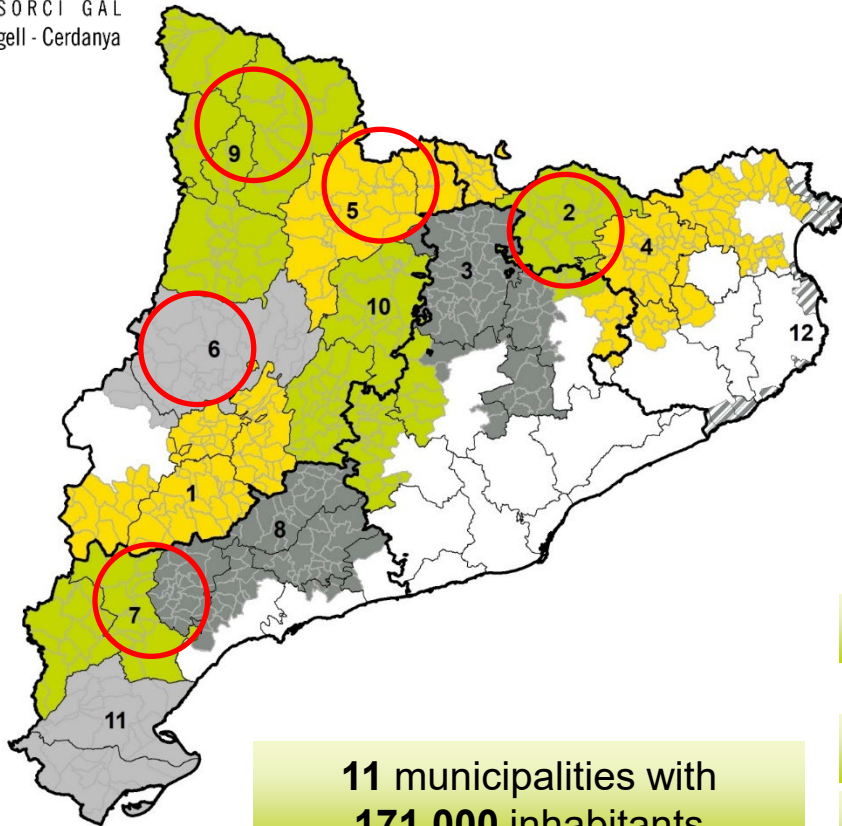
- Forestland 43,9% and Agricultural land 35,5%
- Unemployment rate (1T 2022): 10,23%
- Youth unemploy. rate (16-24 yr.): 25,33%

MAIN FEATURES

- Surface: **32.107 Km²** (6,3% of the Spanish surface)
- Population (2022): **7,7 inhabitants**
- Total population density: 234,3 inhab./Km²
- Rural population density: 32,7 inhab./Km²



LAG in Catalonia



11 municipalities with
171.000 inhabitants

1. Associació Leader de Ponent
- 2. Associació Leader Ripollès Ges Bisaura**
3. Associació pel Desenvolupament Rural de la Catalunya Central
4. ADRINOC
- 5. Consorci Grup d'Acció Local Alt Urgell – Cerdanya**
- 6. Consorci Grup d'Acció Local Noguera – Segrià Nord**
- 7. Consorci Intercomarcal d'Iniciatives Socioeconòmiques**
8. Consorci Leader de Desenvolupament Rural del Camp
- 9. Consorci Leader Pirineu Occidental**
10. Consorci per al Desenvolupament de la Catalunya Central
- 11. Consorci per al Desenvolupament del Baix Ebre i Montsià**
12. Associació Grup d'Acció Local Pesquer Costa Brava

73% of the total surface of Catalonia

556 out of 947 municipalities

10% of the total population

Context indicators



1- The rural territory occupied by **forest is increasing**. Most of it is **unmanaged**. An important part is included in the Plan of Areas of Natural Interest (PEIN) of Catalonia. **Natural space as an opportunity**



2- The **agricultural sector** is still important in terms of rootedness, natural conservation and local identity. The sector loses weight and farmers. The **tourism** is very important in terms of social and economic dynamics.



3- The **population** is quite old. **“Brain drain” Rural areas without young talent?**



4- **Public services?** primary school, health centers, cultural equipment, public transport...



5- **Governance** and bottom-up decision-making in rural territories. Young people need to be listened to and involved.

The participatory process



A good opportunity to actively participate for the local stakeholders and citizens as well.



Inclusive and accessible methodological process: surveys, working groups, interviews...



If it is strategic work for the future, the young group must be there. Its role must be vindictive and proactive at the same time.

The participatory process is consistent and complementary with other strategic planning works for rural areas, such as the Rural Agenda of Catalonia.



Local actors

Good relationship with local companies and associations in the territory.

Strengthen communication to make the LAG visible and positioned and spread the work it does beyond the aid Leader lines.

Good involvement of the members of the LAG Assemblies.

It is important to strengthen the relationship to expand knowledge between members and with the organization.

Efforts must be made to incorporate the young group

Update young contacts to incorporate new views and relationships

Aims, areas, actions of Local Development Strategies in relation to fix young people

GAL 3. ALRGB

One of the axes of the Local Strategy Action Plan 23-27 of the Association Leader Ripollès Ges Bisaura is Economic dynamism and innovation: to reach a circular economy that guarantees quality employment.

They are marked as lines of work:

- 1) Support the rural economic fabric and dynamize the rural labor market and*
- 2) Promote the dignity of trades that have value for the territory.*

For this reason, it is intended to participate in some of the actions proposed within the framework of the Odysseus Project, as it is considered that they are part of the strategy. We will work with the talent network (Univers Jove and Brigada Jove) and we will collaborate in the Odisseu Practicum and the Rural Life through the maintenance and content of the website as it is a way to energize the territory.

Aims, areas, actions of Local Development Strategies in relation to fix young people

GAL 5. CAUC

The first strategic objective of the LS Action Plan 23-27 of the CAUC is:

1: Encourage and facilitate both the settlement of the local population and the reception of new population by making an impact on those key aspects for settling down and the quality of life, such as training, job opportunities, housing and the social and cultural environment.

It's operative objectives are:

1.1: Guarantee the retention and return of young talent.

1.2: Facilitate the settlement and reception of population in rural territories.

1.3: Strengthen culture as a tool for social cohesion and rooting.

Line of action: Population and settlement in mountain areas for the aim: People, well-being and the demographic challenge.

Aims, areas, actions of Local Development Strategies in relation to fix young people

GAL 8. CLNSN

With the aim of rooting young people and repopulation, and the line of action of Fostering entrepreneurial culture, the ARRENCA project will be continued and promoted.

The GAL Noguera Segrià Nord sees the need to continue working with this project, which promotes and highlights economic activity and the creation of wealth aimed at young people.

Through the specific objective of creating and consolidating companies, we also want to work on encouraging visits to companies and establishments in order to Promote knowledge and value local business activity among the population, among students .

The aim is to encourage internships in companies in rural areas by university students, with the fact that in this way both the company, which incorporates value, and the young person who knows about opportunities in rural areas can come out strengthened.

Aims, areas, actions of Local Development Strategies in relation to fix young people

GAL 9. CLPO

The Local Development Strategy of the Occidental Pyrenees Leader Consortium tries to respond to the challenges of the territory in terms of rural development.

On the one hand, there are the major global challenges, such as the climate crisis, the effects of which are expected to have a strong impact on the Pyrenees. Also the energy crisis, which already has a direct impact on the local population because it is a territory with very low temperatures in winter and with a strong dependence on private transport for regular trips.

On the other hand, there are the intrinsic challenges of the territory, such as the aging of the population, the difficulty of returning educated young people, the economic dependence on the service sector or the lack of services for people.

Finally, there are challenges that have intensified in recent years, such as the difficulty in accessing decent housing, with the obstacles that this poses to settling people in the territory.

Aims, areas, actions of Local Development Strategies in relation to fix young people

By participating in the "Odysseus" project, we want to work on the challenge linked to "People, well-being and the demographic challenge" with the aim of facilitating the establishment and quality of life of the local population.

We have a sparse and very dispersed population, with an aging population where young people do not make up 15%. Two-thirds of our municipalities are micro-towns (<500 inhabitants), and approximately half have no primary school and no cultural facilities. In addition, the assistance offer is concentrated in the regional capitals.

For these reasons, it is proposed to work to improve services to the population, the promotion of culture and the visualization of job opportunities for young people. And at the same time, the aim is to energize and diversify the local economy. It has been detected that a significant number of businesses and shops do not have continuity, and therefore face the prospect of closing, further weakening the business fabric. Along these lines, we want to promote the takeover of certain businesses that have passed on, work to incorporate specialized training in trades and support new business models, which can be an opportunity for young people.

Aims, areas, actions of Local Development Strategies in relation to fix young people

GAL 11. CIS

The EDL of the CIS is structured around six axes.

Two of these axes are entitled, 'Entrepreneurial territory and opportunities' and 'Collaborative, welcoming and talented territory', from which two lines of action are articulated 'Support to entrepreneurship and the creation and consolidation of employment and economic activity in the territory' and 'Consolidation and improvement of reception structures and services and for the attraction of talent in the territory', whose specific objectives are to 'Improve the generation of economic activity and the promotion of transformative initiatives', and 'Make possible the retention and/or the attraction of people and talent to the territory'

And within the framework of this line and specific objective, a series of operational objectives are deployed, some of which are closely linked to the 'Odysseus' project.

Specifically: Support entrepreneurial and business initiatives, and especially job creation; Promote the economic sectors that form the backbone of the territory, as well as emerging sectors; Enable the creation of new tourist offers and structures to promote the productive ecosystem; Organize services and resources to promote the attraction and/or retention of people and talent.

A phrase, expression, comment... that we want to highlight to finish?

Més local, més rural, més Europa jove!

More local, more rural, more young Europe!